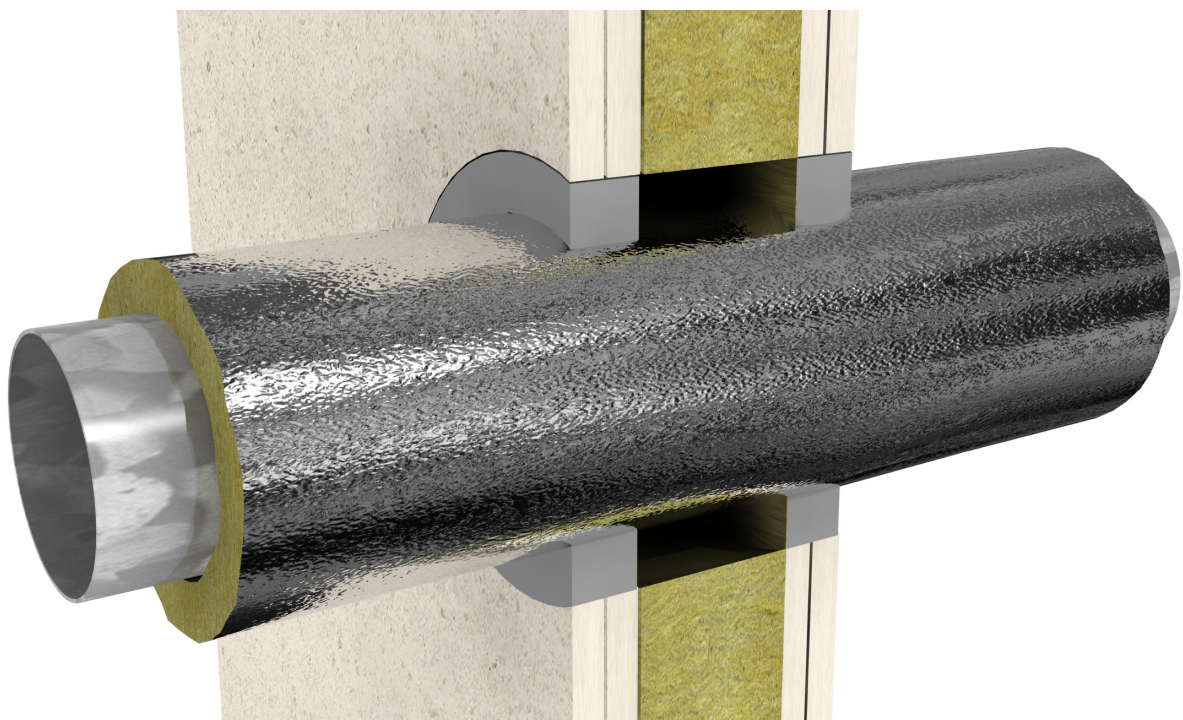


PROMASEAL®-HP Sealant Product Data Sheet

Fire stopping acrylic graphite



www.promat-international.com





General description

PROMASEAL®-HP Sealant is an acrylic based graphite sealant used to reinstate the fire resistance performance of wall and floor constructions where they have been provided for the penetration of single or multiple services to form penetration seals where gaps are present.

PROMASEAL®-HP Sealant expands upon contact with heat, and is considered as an intumescent or reactive material.

PROMASEAL®-HP Sealant has high expansion ratio that cause it to swell upon heating and can achieve fire rating up to 240 minutes.

Fields of application

Linear joints seals in flexible & rigid walls and floor construction.

Penetration seals around Insulated metallic pipes, non-metallic pipes, electrical cables, cable trays & ladders.

System advantages / customer benefit

- Paintable and odorless
- Lubrizol approved
- Backing material can be either Rockwool (80kg/m3) or PE backing rods
- Resist fungi and vermin
- Air, water, smoke and gas tight

Approval

- UL-EU Approval

Packaging

PROMASEAL®-HP Sealant is supplied in liquid form contained within 310ml cartridges (other packaging on demand).

Storage requirements

- Store in cool and dry conditions - 3°C to 40°C
- Shelf life for original sealed containers is at least 18 months
- Once opened the container should be used swiftly

Safety instructions

- Please refer to the safety data sheet for additional advice



Technical data and properties

Colour	Black
Consistency	Liquid
Density	1.23 -1.33 g/cm ³
Expansion onset temperature	+ 180 deg Celcius
Expansion pressure	7 bar
Application temperature	+5 to +35°C
Expansion	Up to 20 times
Acoustic isolation (EN 10140)	52dB
Air permeability (EN 1026)	600 pa- 100pa (11.1/16.7 m ³ /h/m ²)
Ph	6-9
Durability	Z1, intended for use in internal condition
Skin time	15 mins @ 25°C/50 % RH
Cure time	1.7 mm per 24 hours

Application instructions

- For good adhesion the surfaces of the building elements shall be free of any dust or grease and may need to be primed. On good clean, virgin concrete & masonry, no priming required.
- Ensure that the aperture and services in question are tested with PROMASEAL®-HP Sealant and the site conditions are within the application specification.
- An annular space needs to be present around the service to apply sufficient installation depth.
- All services and apertures need to be clean and clear of all dust and loose particles. The aperture temperature needs to be at +5°C or above at time of installation.
- The PROMASEAL®-HP Sealant is either gunned or trowelled into the aperture in or between the separating element/elements to a specific depth utilising various backing materials.
- Upon installation make sure that you install the PROMASEAL®-HP Sealant 20mm annular and 25mm deep around all services effectively. Ensure that you fill all of the annulus and compact the PROMASEAL®-HP Sealant into the annular gap.
- Once compacted, smooth off the PROMASEAL®-HP Sealant to produce a professional finish.



Head Office

Promat International N.V.

Bormstraat 24
2830 Tisselt
Belgium
T +32 15 718 100
F +32 15 718 109
E info@promat-international.com
www.promat-international.com
www.promat-tunnel.com
www.promat-marine.com
www.promat-oilandgas.com

Promat representative in Qatar

Mr. Amr Saeed

Regional Technical Sales Manager
Mobile: +974 55 792 248
Email: amr.saeed@etexgroup.com